

CUBE Mi5
Cube Mi5 – 5-in / 5-out USB 2.0 MIDI interface

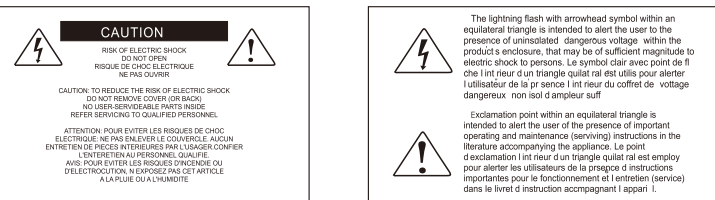


CUBE Mi3
Cube Mi3 – 3-in / 3-out USB2.0 MIDI interface



MidiPort 2
MidiPort 2 – 2-in / 2-out USB2.0 MIDI interface

Owner's Manual



Important Safety Instructions

1. Read this manual thoroughly before using this unit.
2. Keep this manual for future reference.
3. Please read all safety warnings.
4. Follow all instructions included in this manual.
5. Do not expose this unit to rain or moisture. Clean only with a dry cloth.
6. Install this unit in accordance with the manufacturer's instructions.
7. Do not use or store near any heat sources such as radiators, heat registers, stoves, or other heat-producing appliances.
8. Only use attachments/accessories specified by the manufacturer.
9. Refer all servicing to qualified service personnel. Servicing is required when the appliance has been damaged in any way or fails to operate normally.

Introductions

Thank you for purchasing the ICON ProAudio Cube Mi5/ Cube Mi3/ MidiPort 2 digital audio Interface. We sincerely trust this product will provide years of satisfactory service, but if anything is not to your complete satisfaction, we will endeavor to make things right.

In these pages, you'll find a detailed description of the features of the Cube Mi5/ Cube Mi3/ MidiPort 2 digital audio interface, as well as a guided tour through its front and rear panels, step-by-step instructions for their setup and use, and full specifications.

Please register the product on our website at the below link www.iconproaudio.com/registration:

Please follow the step by step procedures. Start by inputting the device's serial number as well as your personal information, etc. By registering your product online, you will be entitled to service and after-sales support at our Help Center by visiting our website at www.iconproaudio.com. Also, all the registered products under your account will be listed on your personal product page where you will find updated information such as

firmware/driver upgrades, software bundles, user manual downloads, etc. for your device.

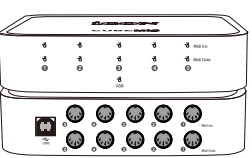
As with most electronic devices, we strongly recommend you retain the original packaging. In the unlikely event the product must be returned for servicing, the original packaging (or reasonable equivalent) is required.

With proper care and adequate air circulation, your Cube Mi5/ Cube Mi3/ MidiPort 2 digital audio interface will operate without any trouble for many years. We recommend that you record your serial number in the space provided below for future reference.

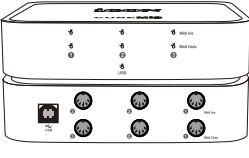
What's in the package?

- Cube Mi5 / Cube Mi3 / MidiPort 2 USB2.0 MIDI interface
- Users' Manual / QuickStart Guide
- USB cable

Features



CUBE Mi5



CUBE Mi3

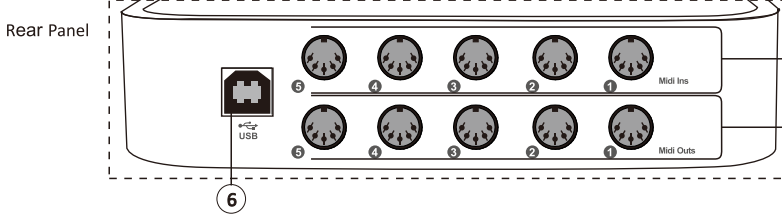
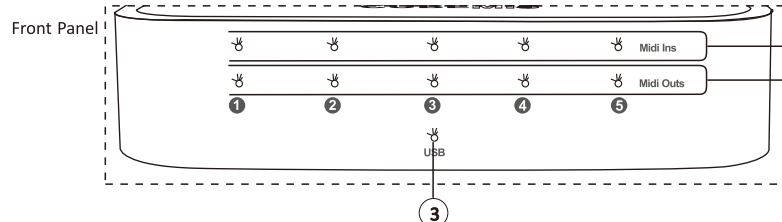


MidiPort 2

1

Front and rear panel descriptions

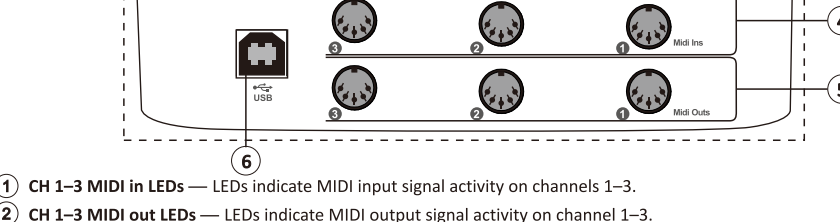
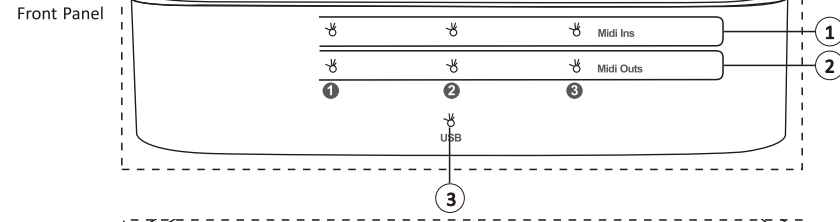
Cube Mi5



- ① **CH 1–5 MIDI in LEDs** — LEDs indicate MIDI input signal activity on channels 1–5.
- ② **CH 1–5 MIDI out LEDs** — LEDs indicate MIDI output signal activity on channel 1–5.
- ③ **USB power LED** — This LED normally pulsates slowly and indicates that the CubeMi5 is in interface mode and is receiving power from the host computer.
- ④ **CH 1–5 MIDI input connectors** — Connect to the MIDI outputs of your studio devices.
- ⑤ **CH 1–5 MIDI output connectors** — Connect to the MIDI inputs of your studio devices.
- ⑥ **USB port** — For connecting the CubeMi5 to a USB port on the host computer, using the USB cable provided.

3

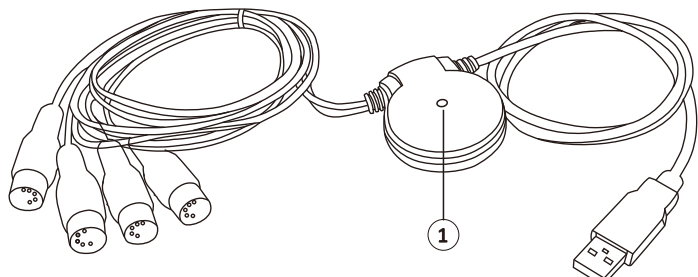
Cube Mi3



- ① **CH 1–3 MIDI in LEDs** — LEDs indicate MIDI input signal activity on channels 1–3.
- ② **CH 1–3 MIDI out LEDs** — LEDs indicate MIDI output signal activity on channel 1–3.
- ③ **USB power LED** — This LED normally pulsates slowly and indicates that the CubeMi3 is in interface mode and is receiving power from the host computer.
- ④ **CH 1–3 MIDI input connectors** — Connect to the MIDI outputs of your studio devices.
- ⑤ **CH 1–3 MIDI output connectors** — Connect to the MIDI inputs of your studio devices.
- ⑥ **USB port** — For connecting the CubeMi3 to a USB port on the host computer, using the USB cable provided.

4

MidiPort 2



- ① **USB power LED** — This LED normally pulsates slowly and indicates that the MidiPort2 is in interface mode and is receiving power from the host computer.

Installation

The installation procedure for CubeMi5 below applies also for the ReoMidi 4 G2, CubeMi3, NeoMidi 2 G2 and MidiPort 2 mod.

(Note: Be fore you begin, make sure you have read your computer's user manual on installing USB devices. It should describe the precautions you should take. You do not need to shut down your computer to install the ICON USB MIDI interface. To install your MIDI interface, carry out the steps below, in order.)

5

For Mac

- ① Connect the USB cable provided between the USB port on your USB MIDI interface (except MidiPort 2, which has the USB cable already attached) and a USB port on your Mac.
- ② The USB LED on the front panel should light. This means that the interface is receiving a power supply from your Mac via the USB cable. No external power supply is needed for your ICON USB MIDI interface.
- ③ Your Mac should "find" the USB MIDI interface device and install its driver automatically (you do not need to install any additional driver software).
- ④ Open your DAW or MIDI software and select or turn on ICON MIDI channels as you require.

For Windows

- ① Connect the USB cable provided between the USB port on your USB MIDI interface (except MidiPort 2, which has the USB cable already attached) and a USB port on your PC.
- ② The USB LED on the front panel should light. This means that the interface is receiving a power supply from your PC via the USB cable. No external power supply is needed for your ICON USB MIDI interface.
- ③ Your PC should "find" the USB MIDI interface device and install its driver automatically (you do not need to install any additional driver software).
- ④ Once your ICON USB MIDI interface device has installed, go to "Device Manager". Under "Sound, video and game controllers" double click "USB Audio Device."
- ⑤ Check that the properties screen is as below:

6

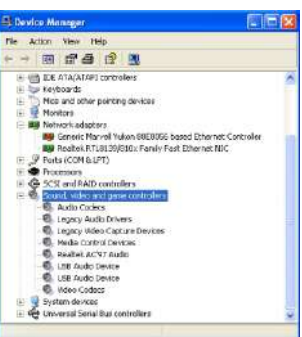


Diagram 1



Diagram 2

MultiPlat™ Driver Installation (PC only)

Thanks to ICON's innovative MultiPlat software driver technology your USB MIDI interface supports Multi-Platform applications. Page at www.iconproaudio.com. After you downloaded the driver file, please click it to start the installation process

- ① **Turn on your PC.**
(Note: Do not connect or disconnect your USB MIDI interface to or from your PC at this stage.)
- ② **Download the Windows driver from your "Personal Use" Page at www.iconproaudio.com**
After you downloaded the driver file, please click it to start the installation process



7

- ③ **The Setup Wizard appears**
Select your desired language



Diagram 2

- ④ **Install driver**
Click the "Install driver" button

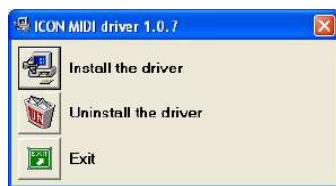


Diagram 3

- ⑤ **Installation starts**



Diagram 4

8

- ⑥ **Connect your USB MIDI interface**
Connect your USB MIDI interface to a USB port on your PC using the cable provided.



Diagram 5

- ⑦ **Driver installation complete**



Diagram 6

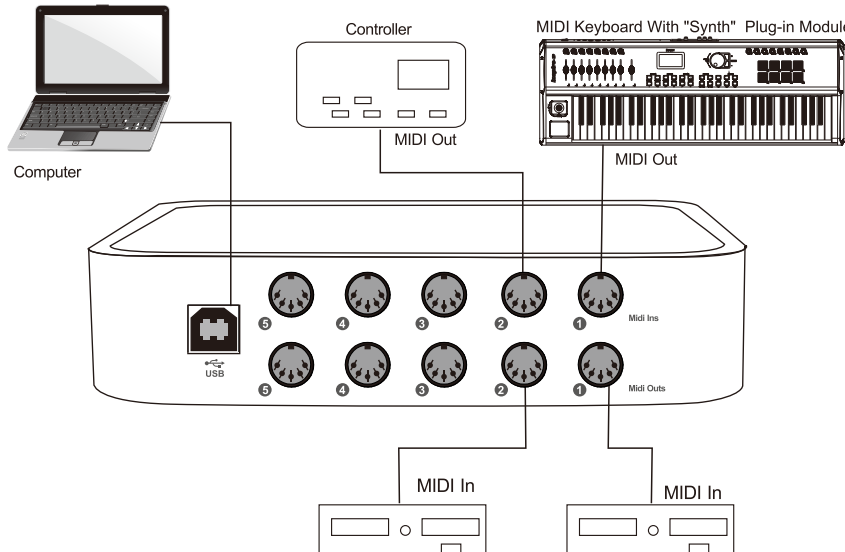
9

Your MIDI studio

A typical MIDI studio set-up would include your ICON USB MIDI interface device, a computer, MIDI sequencing software, a MIDI controller keyboard and possibly MIDI-compatible sound modules.

Setting up your MIDI Studio

A typical MIDI studio set-up would include your ICON USB MIDI interface device, a computer, MIDI sequencing software, a MIDI controller keyboard and perhaps MIDI compatible sound modules.



10

Setting up your MIDI Studio(continues)

- ① The ICON USB MIDI interface is connected to the computer via the USB port using the USB cable provided.
- ② The MIDI-out port of your controller keyboard is connected to the Input 1 connector on your USB MIDI interface.
- ③ Output 1 on the USB MIDI interface is connected to the MIDI In of a sound module. (This can also be your MIDI controller keyboard if it is also serving as a sound module).
- ④ Output 2 (and 3, 4 and 5) (depending on your model) may be connected to additional sound modules.
- ⑤ The MIDI output of a second controller, such as drum pads or a wind controller, is connected to the Input 2 connector.
- ⑥ Your music software manages the routing of MIDI data to and from your Mac/PC. Proper installation of the USB MIDI interface device driver allows each of the MIDI ports to appear in any MIDI application.
- ⑦ One of the additional inputs can be used as a synchronization input, such as the MIDI clock from a drum machine or MIDI Time Code from another sync source.

11

Using the ICON MIDI interface in your application software

- Once the USB MIDI interface device has been successfully installed, you will need to configure your MIDI application software to use the ICON USB MIDI interface. Every application does this a little differently, so we can only cover the basics here.
- Most MIDI applications have a MIDI port configuration or MIDI settings dialog window. This window is usually called something like "MIDI devices" or "MIDI Setup". This is where you select your MIDI input and output settings. You will also need to configure your OMS Studio setup.
- After the ICON MIDI interface is installed, the port selection shows each of the MIDI input and output channels. These input and output channels are numbered to correspond to the physical inputs and outputs of your ICON USB MIDI interface. For the ports to be enabled for use by the application, make sure that each of these input and output channels, in order, is highlighted or checked in the dialog box.
- Follow your MIDI sequencing program's instructions for setting up the rest of your MIDI studio. You may need to put your controller keyboard into "Local Off" mode and the sequencer into "Keyboard Thru" mode. To play one of your synthesizers or modules from the sequencer, select the MIDI output that corresponds to that instrument. Again, check your sequencer's instructions for more details.

12

Specifications

Model		CubeMi 5	CubeMi 3	MidiPort 2
Connector	USB	USB female Connector (Standard type) x 1		USB male connector x 1
	MIDI input channel	Din 5 MIDI Connector x 5	Din 5 MIDI Connector x 3	Din 5 MIDI Connector x 2
	MIDI output channel	Din 5 MIDI Connector x 5	Din 5 MIDI Connector x 3	Din 5 MIDI Connector x 2
Power supply		USB bus-powered		
Current consumption		150mA or less	100mA or less	100mA or less
Weight		0.94kg / 2.1lb	0.88kg / 1.9lb	0.15kg / 0.33lb
Dimensions	(mm)	165 (W) x 165 (D) x 50 (H)	165 (W) x 165 (D) x 50 (H)	56 (W) x 46 (D) x 17 (H)
	(inch)	6.5" (W) x 6.5" (D) x 2.0" (H)	6.5" (W) x 6.5" (D) x 2.0" (H)	2.25" (W) x 1.8" (D) x 0.65" (H)

13

Service

If your CubeMi5/ CubeMi3 /MidiPort2 needs servicing, follow these instructions.

1. Ensure the problem is not related to operation error or external system devices.
2. Keep this owner's manual. We don't need it to repair the unit.
3. Pack the unit in its original packaging including end card and box. This is very important. If you have lost the packaging, please make sure you have packed the unit properly. ICON is not responsible for any damage that occurs due to non-factory packing.
4. Please contact your local distributor for servicing. For your local distributor address and contact information, please check our official website at the below link:
<http://www.iconproaudio.com/Com.aspx>

If you are located in US
Send the product to:
North America
Mixware, LLC – U.S. Distributor 11070 Fleetwood Street – Unit F. Sun Valley, CA 91352; USA
Tel.: (818) 578 4030
Contact: www.mixware.net/help

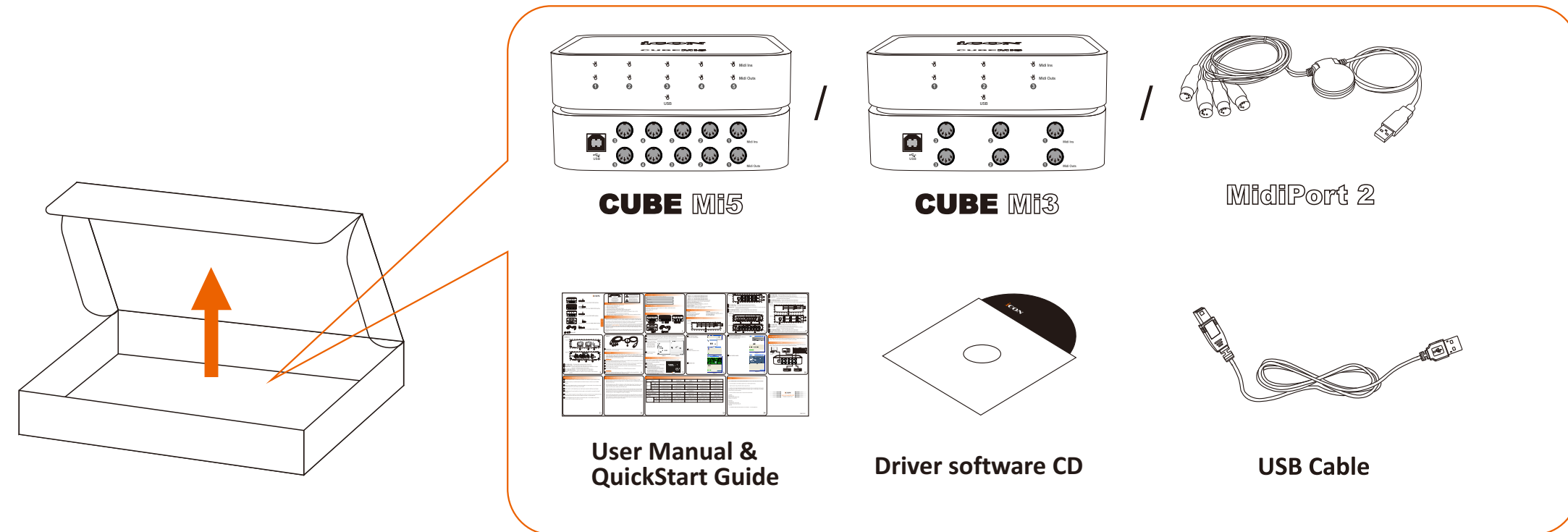
If you are located in Europe
Send the product to:
Sound Service
GmbH European Headquarter Moriz-Seeler-Straße 3D-12489 Berlin
Telephone: +49 (0)30 707 130-0
Fax: +49 (0)30 707 130-189
E-Mail: info@sound-service.eu

If you are located in Hong Kong
Send the product to:
ASIA OFFICE:
Unit F, 15/F., Fu Cheung Centre, No. 5-7 Wong Chuk Yung Street, Fotan, Sha Tin, N.T., Hong Kong.

5. For additional update information please visit our website at: www.iconproaudio.com

14

1 Unpack



Note: Cube Mi5 / Cube Mi3 / MidiPort 2 USB2.0 MIDI interface in Pack

2 MAC Turn on your Mac

Connect the USB cable provided between a USB port on your Mac and the USB port on your USB MIDI interface. Your Mac should “find” the interface and install its driver automatically.



3 Set up your DAW or MIDI software

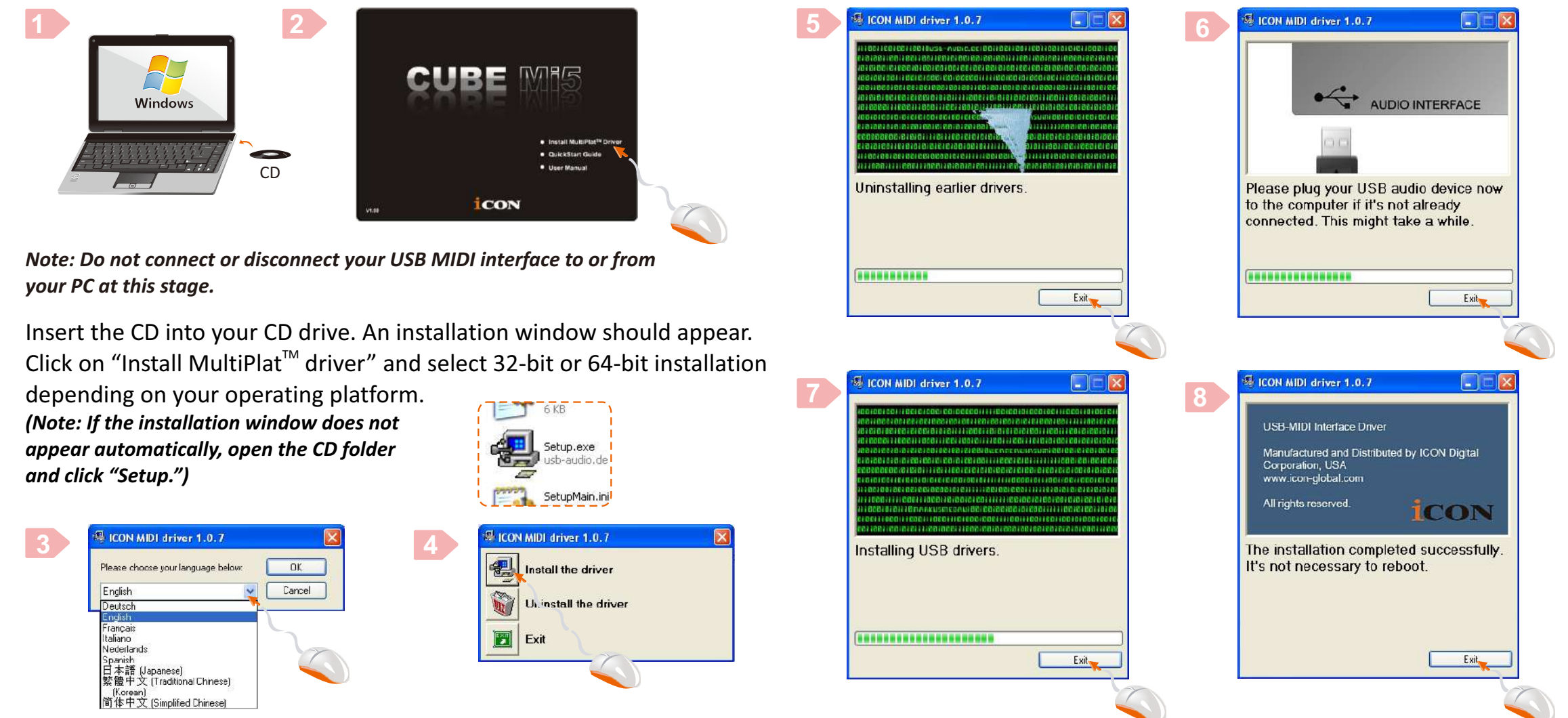
Activate the ICON USB MIDI ports in your DAW or MIDI software using “MIDI setup” or “MIDI devices”
(**Note:** Every application does this a little differently, so refer to your software user manual for the settings.)

4 PC Turn on your computer

Connect the USB cable provided between a USB port on your PC and the USB port on your USB MIDI interface. Your PC should “find” the interface and install its driver automatically.



5 Install the MultiPlat™ software driver



Note: Do not connect or disconnect your USB MIDI interface to or from your PC at this stage.

Insert the CD into your CD drive. An installation window should appear. Click on “Install MultiPlat™ driver” and select 32-bit or 64-bit installation depending on your operating platform.
(**Note:** If the installation window does not appear automatically, open the CD folder and click “Setup.”)

6 Set up your DAW or MIDI software

Activate the ICON USB MIDI ports in your DAW or MIDI software using “MIDI setup” or “MIDI devices”
(**Note:** Every application does this a little differently, so refer to your software user manual for the settings.)

